

## Frame 1-2 Four Views

After students view the activating PowerPoint or movies, they can respond by connecting to one of the four images of housing. Enlarge each to 8 ½ x 11 and post around the classroom. Have students consider the essential question and stand the picture that reflects their thinking. The students turn and talk to their group and explain why they chose the image. For example, “I feel like I live in an apartment, because I never thought of the poor and homeless in this way before. It’s like from the inside, I’m really looking outside for the first time.” “I feel like an accountant because it just doesn’t add up. What can be done to change the numbers?”

**When I think about basic rights to food, shelter, water and fuel I feel like a . . .**



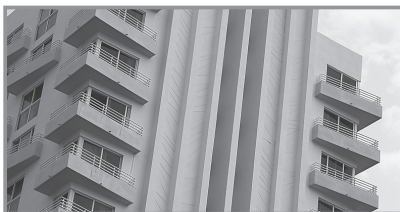
**building under construction**



**an apartment**



**a shack**



**a hotel**

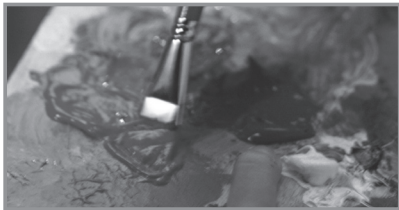
When I think about poverty and homelessness I feel like a...



**fisherperson**



**accountant**



**artist**



**farmer**